

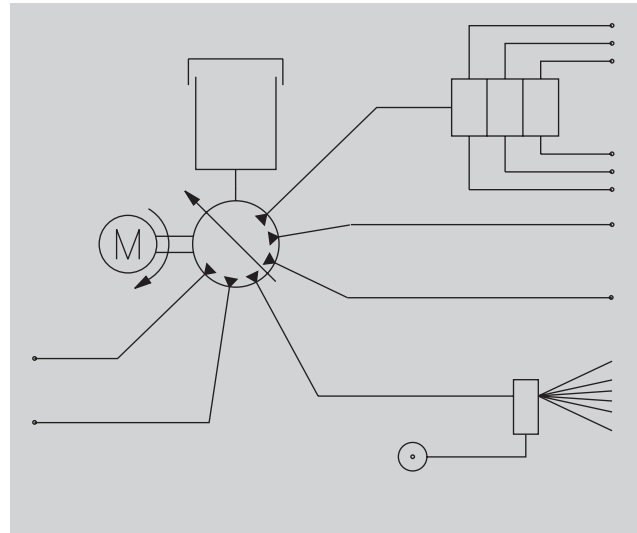
Motor-driven pump unit GSJB

1-4002-1-US

Multi-outlets pump units with oil or grease reservoir designed for centralized lubrication systems.



GSJB0-2K + GS100.8



Application

The motor-driven pump units GSJB have been especially designed for centralized lubrication system using disposable lubricants.

The multi-outlets pump units suit perfectly the industrial requirements. They make it possible to feed directly several lubrication points (1 to 6), or progressive feeders and spray nozzles. So they can feed at the same time a great number of lubrication points under hard operation conditions or in a severe environment.

Different versions of the pump unit are available, according the capacity of the reservoir and the number of pumping elements.

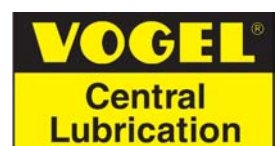
Advantages

- Up to 6 pumping elements.
- Designed to supply directly several lube points or large-size progressive systems.
- Security of the pumping system by means of the stirrer. It homogenizes the grease avoiding like this any air bubble in the lubricant. Thus the risk of unpriming is greatly reduced.
- Transparent reservoir, which makes the control of the grease easier.
- Possibility to add a minimal level switch to the pump.
- Pumps working with pressure up to 250 bars.
- The pump function can be entirely automatized by means of an electronic control unit.



ISO 9001
1995/3256

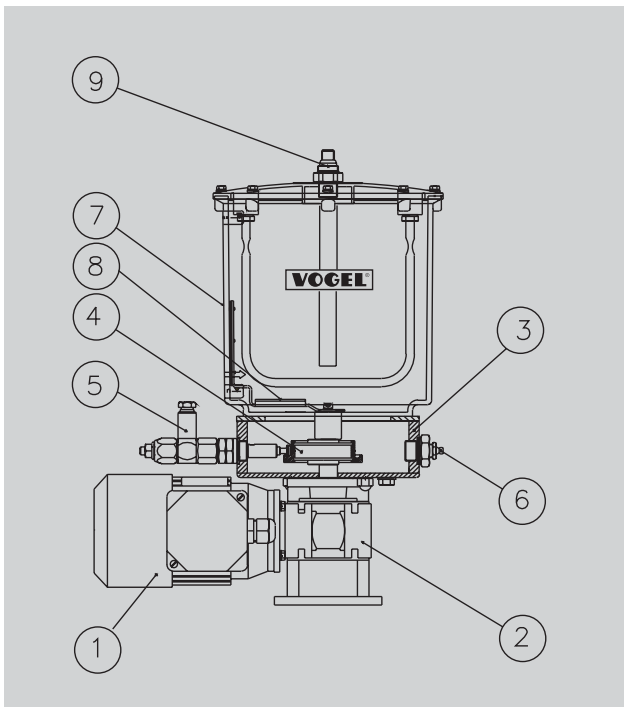
www.vogelfrance.com



Description of the main components

The unit consists mainly of:

- a single or three phase motor (1),
- a reducing gear pair (2) (wheel and screw),
- a housing (3) fitted with:
 - . an eccentric cam (4) on bearings,
 - . 6 radial connection ports for the pumping elements (5) type GS100-8, (the connection ports, which are not used, can be blocked with a plug, which can be easily replaced by a pumping element),
- a lubricant nipple (6) to refill under pressure the reservoir,
- a transparent reservoir (7) with a follower plate (8) for grease reservoir; a min. level switch (9) (optional).



Function

The main shaft makes a vertical shaft move by means of the gear reducing pair. The vertical shaft is fitted with an eccentric cam, which actuates the pressure piston of the different pumping elements. Every pumping element is metering and delivering a certain quantity of lubricant. The delivery rate is specific to every pumping element and adjustable.

The pump GSJB0 is delivered without pumping element. They have to be ordered separately.

The stirrer is reducing the risks of malfunction due to the presence of air bubbles in the grease (unpriming) or the separation of its different components.

Delivery rate adjustment

Outside - no dismounting. Once the nut has been unscrewed, adjust the valve piston stroke by means of a setting screw.



Technical Data

- **Number of outlets** (pumping elements) 1 to 6
- **Flow rate per outlet [cm³/min]** 0 to 2.25
- **Pressure [bar]** 250 max.
- **Lubricant**, grease grade..... ≤ **NLGI-grade 2**
Note: for lubricants for special applications, please consult us.
- **Outlet connection**, orientable, drilling 1/4 BSP
- **Reservoir with stirrer**, capacity [kg] 2 or 6

- Filling up lubricant

Only under pressure (max. 0.8 bar) through a grease nipple by means of a pneumatic or hand-operated filling pump.
Filler connector, con. DIN 71412 - M 10 x 1

- Min. level switch (option) with capacitive proximity switch

- . Voltage max. [V - DC] 10 to 30
- . Intensity max. [mA]..... 6 to 12
- . Type of switch (4 leads)..... PNP NO
- . Opening by lack of grease
- . Electrical connection to the switch by means of round connector, 4 poles - not delivered.

- Motor	1-phase	3-phase
Class	F/vented	F/vented
Duty ratio	100 %	100 %
Voltage	230 V*	230/400 V*
Frequency	50 Hz	50 Hz
Power.....	90 W	90 W
Protection.....	IP 55	IP 55
Rotation speed.....	1500 rpm	1500 rpm
Intensity 230 V	I = 0,59 A	I = 0,89 A
Intensity 400 V	-	I = 0,34 A

(*) Low tension directive 73/23/EEC - Norm EN 60439.

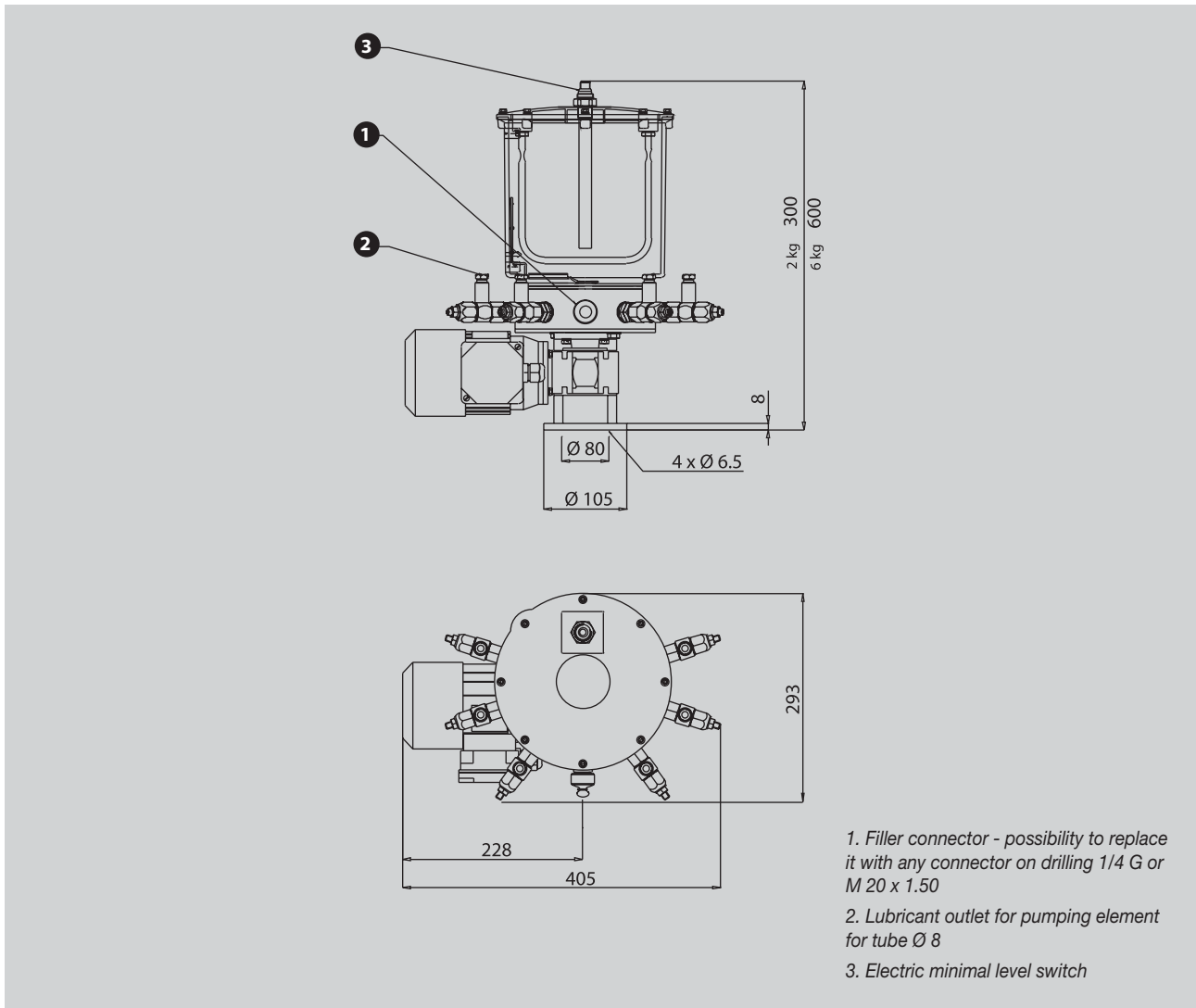
- **Operating temperature [°C]** -10 to +40

- Material

- . Pumping element..... steel and brass
- . Case..... steel
- . Reservoir..... polycarbonate

- Weight [kg]

- . Motor-driven pump unit with reservoir 2 kg 9.5
- . Motor-driven pump unit with reservoir 6 kg 10.5
- . Support plate GSJ1096 2.2
- . Pumping element 0.35



Order information

Motor-driven pump unit without pumping element

Order No.	Reservoir capacity [kg]	Electric min. level switch	Power supply		Voltage [V]	Frequency [Hz]
			1-phase	3-phase		
GSJB0-2K+428	2	-	•	-	230	50
GSJB0-2K+140	2	-	-	•	230/400	50
GSJB0-2K1+428	2	•	•	-	230	50
GSJB0-2K1+140	2	•	-	•	230/400	50
GSJB0-6K+428	6	-	•	-	230	50
GSJB0-6K+140	6	-	-	•	230/400	50
GSJB0-6K1+428	6	•	•	-	230	50
GSJB0-6K1+140	6	•	-	•	230/400	50

**Pumping element(s) - up to 6
(to be ordered separately)**

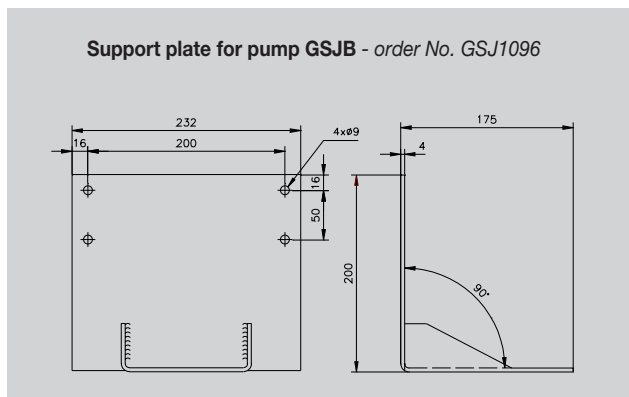
for piston Ø 8 and tube Ø 6.	GS100.8.6
for piston Ø 8 and tube Ø 8.	GS100.8.8

Pumping element GS100.8.8



Pump support plate

Order No.	GSJ1096
-----------	----------------



**If option "minimal level switch"
Connectors 4 poles**

Order No.	type	lead 5 m	voltage max.	current max.
179 990 371	straight	-	0 to 30 V AC/DC	3 A
179 990 372	angled	-	0 to 30 V AC/DC	3 A
179 990 600	straight	•	10 to 30 V AC/DC	4 A
179 990 601	angled	•	10 to 30 V AC/DC	4 A

Please ask for the following leaflets to find individual components for VOGEL lube systems:

- Fixtures and accessories.....1-0103-US
- Electric Plug-and-Socket Connectors.....1-1730-US

Notice!

All products from VOGEL may be used only for their intended purpose. If operating instructions are supplied together with the products, the provisions and information therein of specific relevance to the equipment must be observed as well.

In particular, we call your attention to the fact that hazardous materials of any kind, especially the materials classified as hazardous by EC Directive 67/548/EEC, Article 2, Par. 2, may only be filled into VOGEL central lubrication systems and components and delivered and/or distributed with the same after consultation with and written approval from VOGEL.

All products manufactured by VOGEL group are not approved for use in conjunction with gases, liquefied gases, pressurized gases in solution and fluids with a vapor pressure exceeding normal atmospheric pressure (1013 mbars) by more than 0.5 bar at their maximum permissible temperature.



Willy Vogel AG
 Motzener Strasse 35/37
 12277 Berlin, Germany
 PF 97 04 44 · 12704 Berlin
 Tel. +49 (0) 30-720 02-0
 Fax +49 (0) 30-720 02-111
 info@vogel-berlin.de
 www.vogelag.com

Willy Vogel AG
 2. Industriestrasse 4
 68766 Hockenheim
 Germany
 Tel. +49 (0) 62 05-27-0
 Fax +49 (0) 62 05-27-132
 info@vogel-berlin.de
 www.vogelag.com

Vogel France SAS
 Rue Robert Amy, B.P. 70130
 49404 Saumur cedex
 France
 Tel. +33 (0) 241 404 200
 Fax +33 (0) 241 404 242
 info@vogelfrance.com
 www.vogelfrance.com